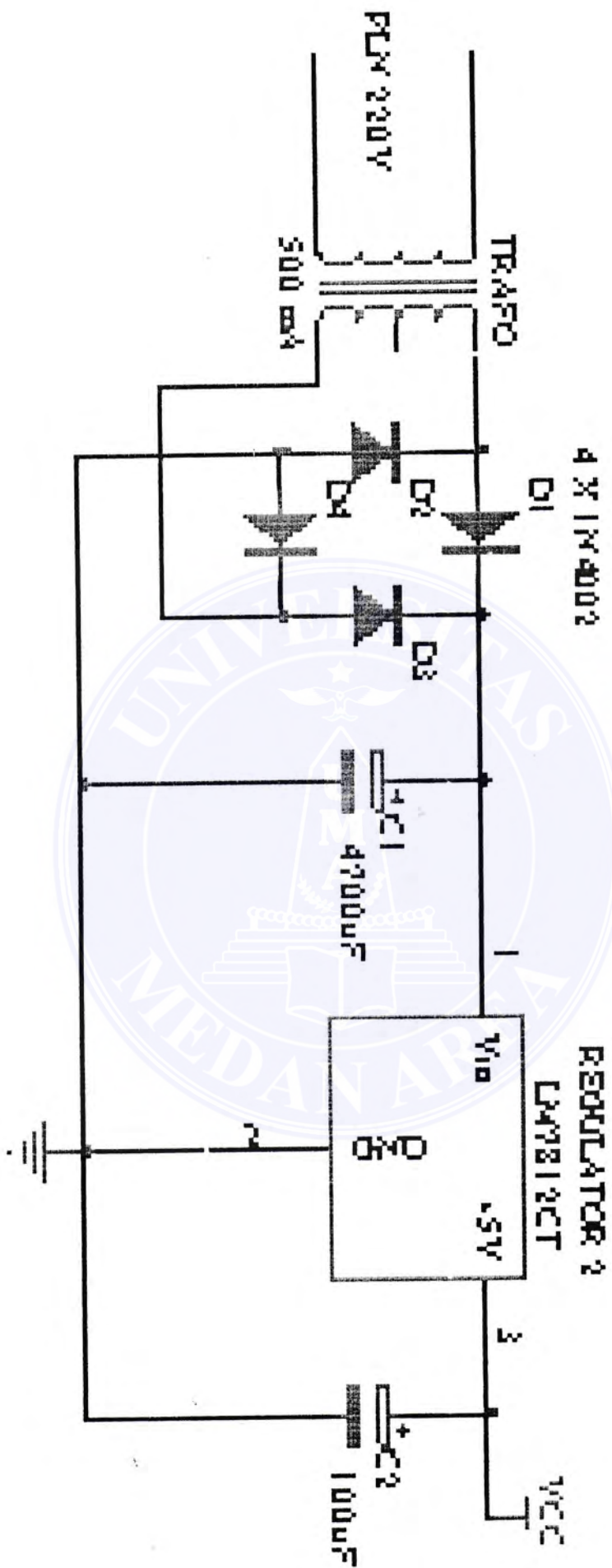
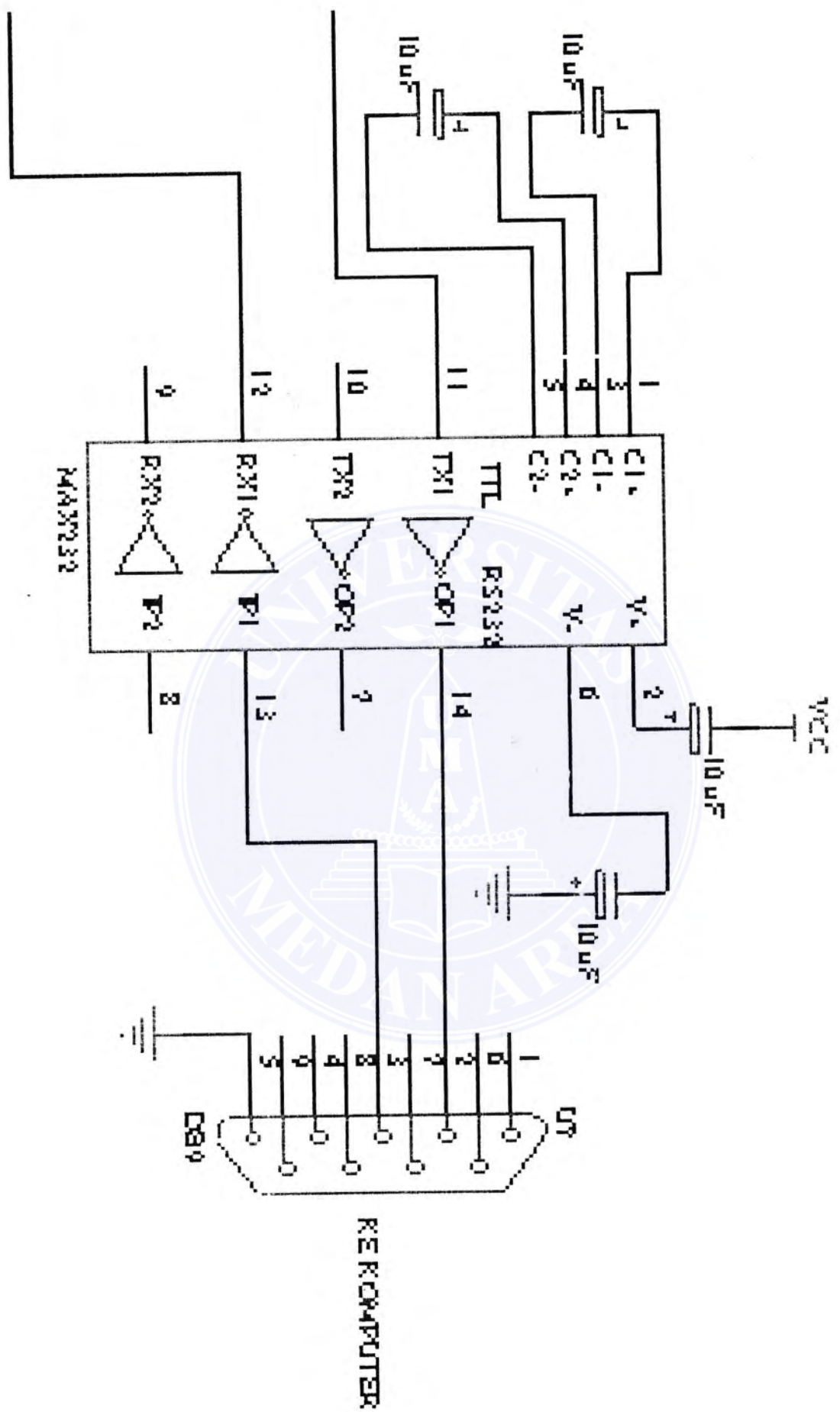
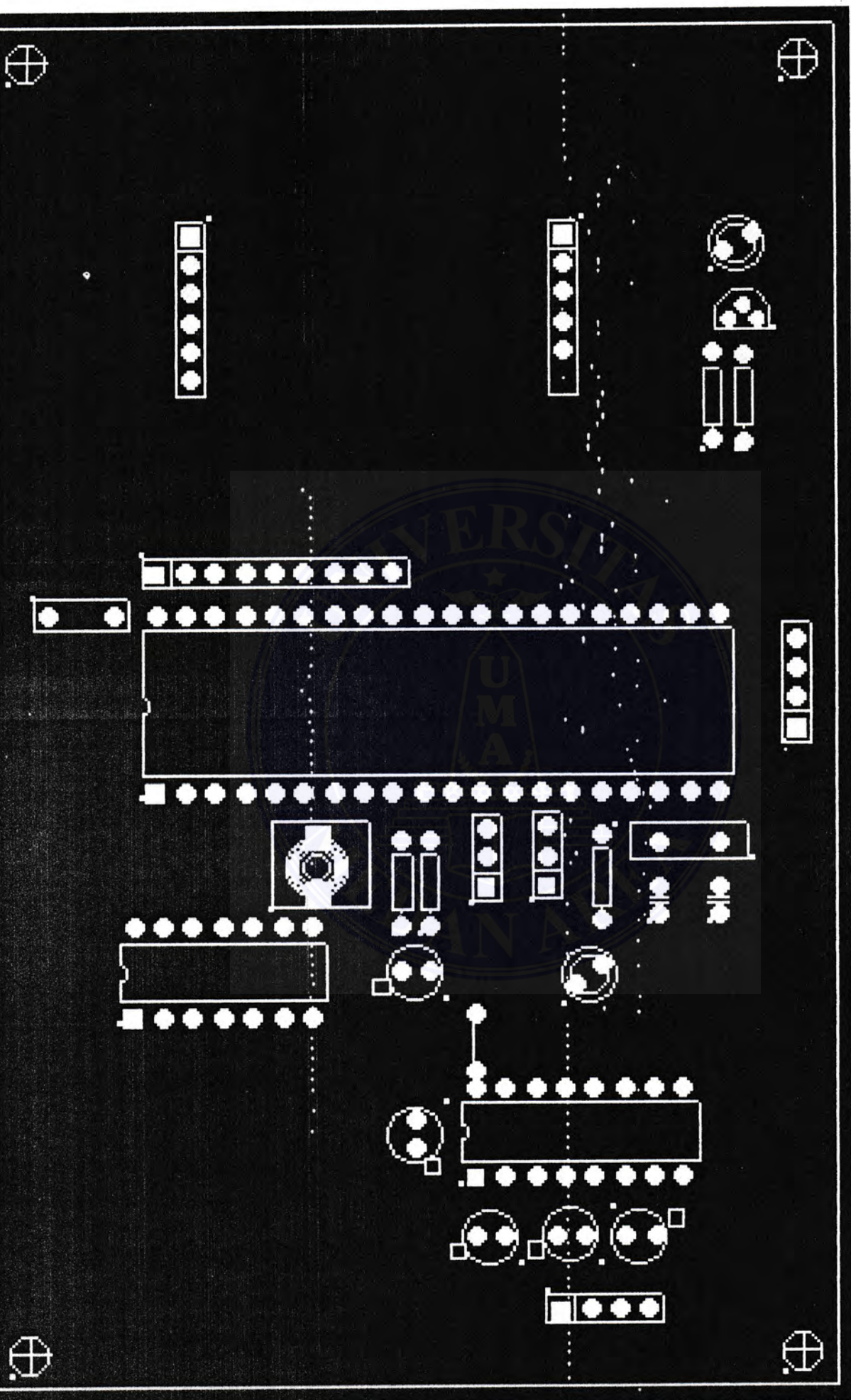


DAFTAR PUSTAKA

1. Teori dan Aplikasi Mikrokontroler AT89C51. Sudjadi : Penerbit Graha Ilmu
2. Coughlin, Robert F. 1994. Penguat Operasional dan Rangkaian Terpadu Linear. Edisi kedua. Terjemahan Herman Widodo S. Jakarta : Penerbit Erlangga.
3. DC Green, Komunikasi Data, Andi Offset, Yogyakarta, 1998.
4. Rangkaian Elektronika Rufus P. Turner Brinton L. Rudherford : Penerbit PT. Elex Media Komputindo
5. Elektuur. 1994. Data Sheet Book 1, Data IC Linear, TTL, dan CMOS. Cetakan ke-2. Terjemahan Wasito S. Jakarta : PT. Elex Media Komputindo.
6. Hall, Douglas V. 1992. Microprocessor and Interfacing, Programming and Hardware. 2nd Edition. Singapore : McGraw Hill, Inc.
7. Paulus Andi Nalwan. 2003. Panduan Praktis Teknik Antarmuka dan Pemrograman Mikrokontroler AT89C51. Jakarta. PT. Elex Media Komputindo.
8. Pengenalan Elektronika J. A Stanley : Penerbit Pioner Jaya Bandung
9. Widyatmo, A dkk. 1994. Belajar Mikroprosesor dan Mikrokontroler melalui komputer PC. Jakarta : PT. Elex Media Komputindo.
10. Wildi, T. 1989. Electrical Machines, Drives, and Power Systems. 2nd Edition. New Jersey : Prentice Hall International.

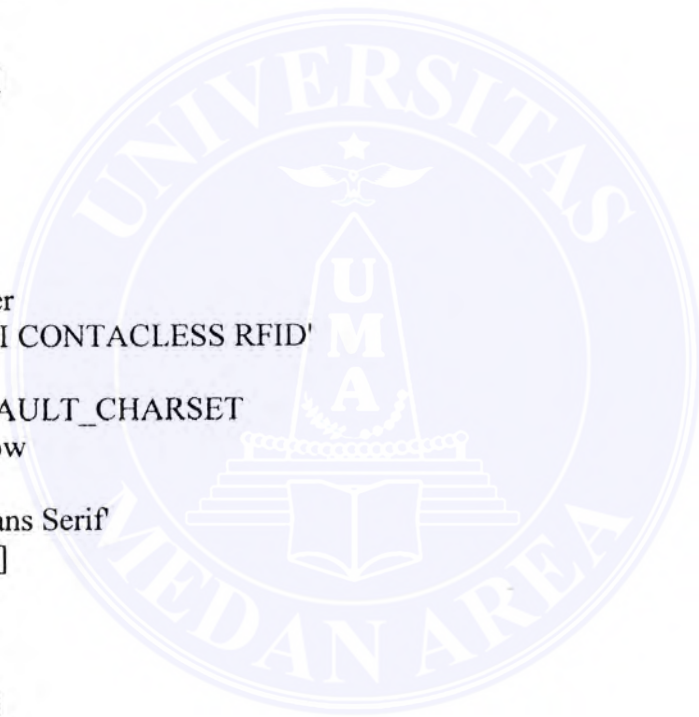




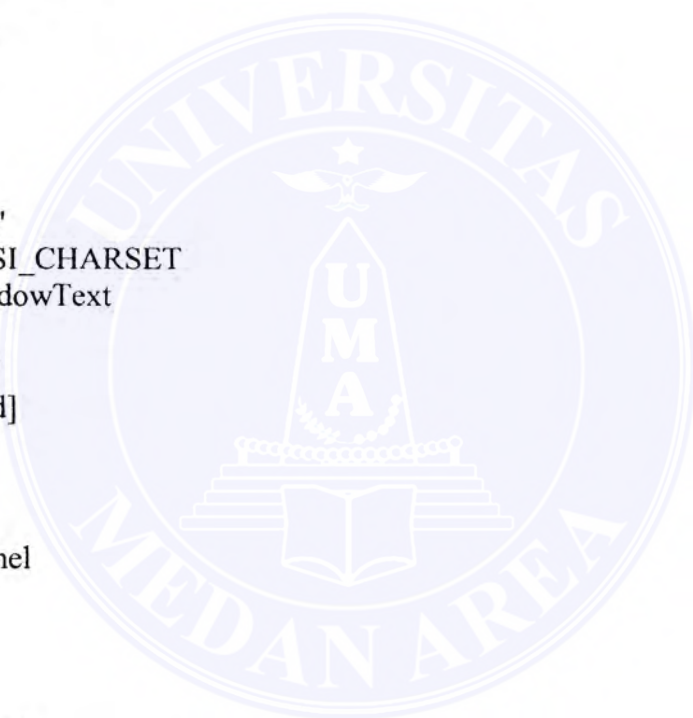


UNIVERSITAS MEDAN AREA

```
object Form1: TForm1
  Left = 295
  Top = 143
  Width = 402
  Height = 343
  Caption = 'Form1'
  Color = clBtnFace
  Font.Charset = DEFAULT_CHARSET
  Font.Color = clWindowText
  Font.Height = -11
  Font.Name = 'MS Sans Serif'
  Font.Style = []
  OldCreateOrder = False
  OnCreate = FormCreate
  PixelsPerInch = 96
  TextHeight = 13
object Label4: TLabel
  Left = 0
  Top = 0
  Width = 394
  Height = 13
  Align = alTop
  Alignment = taCenter
  Caption = 'ABSENSI CONTACTLESS RFID'
  Color = 16744448
  Font.Charset = DEFAULT_CHARSET
  Font.Color = clYellow
  Font.Height = -11
  Font.Name = 'MS Sans Serif'
  Font.Style = [fsBold]
  ParentColor = False
  ParentFont = False
end
object Panel1: TPanel
  Left = 8
  Top = 24
  Width = 217
  Height = 281
  Color = 8421440
  TabOrder = 0
object Label1: TLabel
  Left = 88
  Top = 80
  Width = 31
  Height = 13
  Caption = 'NAMA'
```



```
end
object Label2: TLabel
  Left = 96
  Top = 144
  Width = 18
  Height = 13
  Caption = 'NIP'
end
object Label3: TLabel
  Left = 72
  Top = 208
  Width = 69
  Height = 13
  Caption = 'NOMOR RFID'
end
object pjam: TPanel
  Left = 8
  Top = 8
  Width = 97
  Height = 33
  Caption = '00:00:00'
  Font.Charset = ANSI_CHARSET
  Font.Color = clWindowText
  Font.Height = -16
  Font.Name = 'Arial'
  Font.Style = [fsBold]
  ParentFont = False
  TabOrder = 0
end
object ptanggal: TPanel
  Left = 112
  Top = 8
  Width = 97
  Height = 33
  Caption = '00/00/0000'
  Font.Charset = ANSI_CHARSET
  Font.Color = clWindowText
  Font.Height = -13
  Font.Name = 'Arial'
  Font.Style = [fsBold]
  ParentFont = False
  TabOrder = 1
end
object pnama: TPanel
  Left = 8
  Top = 104
```



```
Width = 201
Height = 33
BevelInner = bvLowered
Color = clWhite
TabOrder = 2
end
object pnp1: TPanel
Left = 8
Top = 168
Width = 201
Height = 33
BevelInner = bvLowered
Color = clWhite
TabOrder = 3
end
object prfid: TPanel
Left = 8
Top = 232
Width = 201
Height = 33
BevelInner = bvLowered
Color = clWhite
Font.Charset = DEFAULT_CHARSET
Font.Color = clWindowText
Font.Height = -19
Font.Name = 'MS Sans Serif'
Font.Style = [fsBold]
ParentFont = False
TabOrder = 4
end
end
object Panel7: TPanel
Left = 232
Top = 24
Width = 153
Height = 281
Color = clOlive
TabOrder = 1
object BitBtn1: TBitBtn
Left = 8
Top = 16
Width = 137
Height = 41
Caption = 'RUBAH / TAMBAH DATA'
TabOrder = 0
OnClick = BitBtn1Click
```

